

ALAPPUZHA

A PERFECT BACKWATER RETREAT

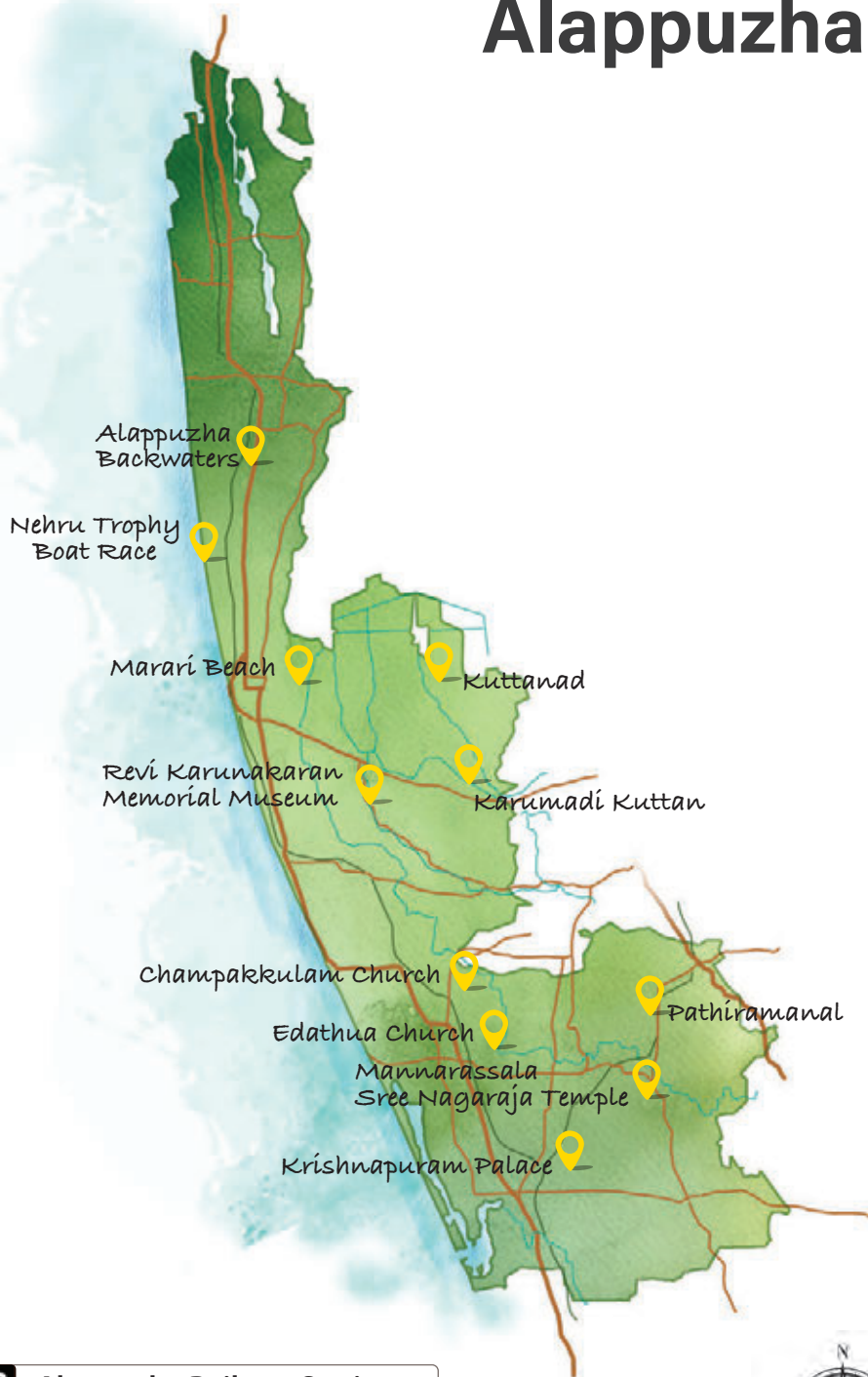


*Experience the Green Paradise from the
Tranquility of a Houseboat*

An Array of Beauty and Flavour

*P*icture yourself on a mesmerising canoe expedition, discovering the scenic charm of Alappuzha! Take a ride along the serene narrow canals to savour your eyes with the refreshing sight of countryside living. You will be greeted with the quacking sounds of ducks and the idyllic sight of villagers fishing on the banks while traversing along the backwaters of Alappuzha. The district is adorned with ancient churches, temples, and remnants of colonial architecture, each echoing stories of yesteryears. The gastronomy of Alappuzha's Kuttanad is a reflection of its pioneering agricultural methods. Kuttanadan dishes proudly showcase red rice, duck, and tapioca, where duck curry and tapioca delicacies holding a special place in the hearts of locals.

Tourist map of Alappuzha



Alappuzha Railway Station



Cochin International Airport



Alappuzha Bus Station





Alappuzha
Backwaters 05



07 Kuttanad



Marari Beach 09



11 Krishnapuram
Palace



Karumadi
Kuttan 13

15 Revi Karunakaran
Memorial Museum





19 Champakkulam Church

Pathiramanal Island

17



Edathua Church 21



23 Mannarassala Sree Nagaraja Temple



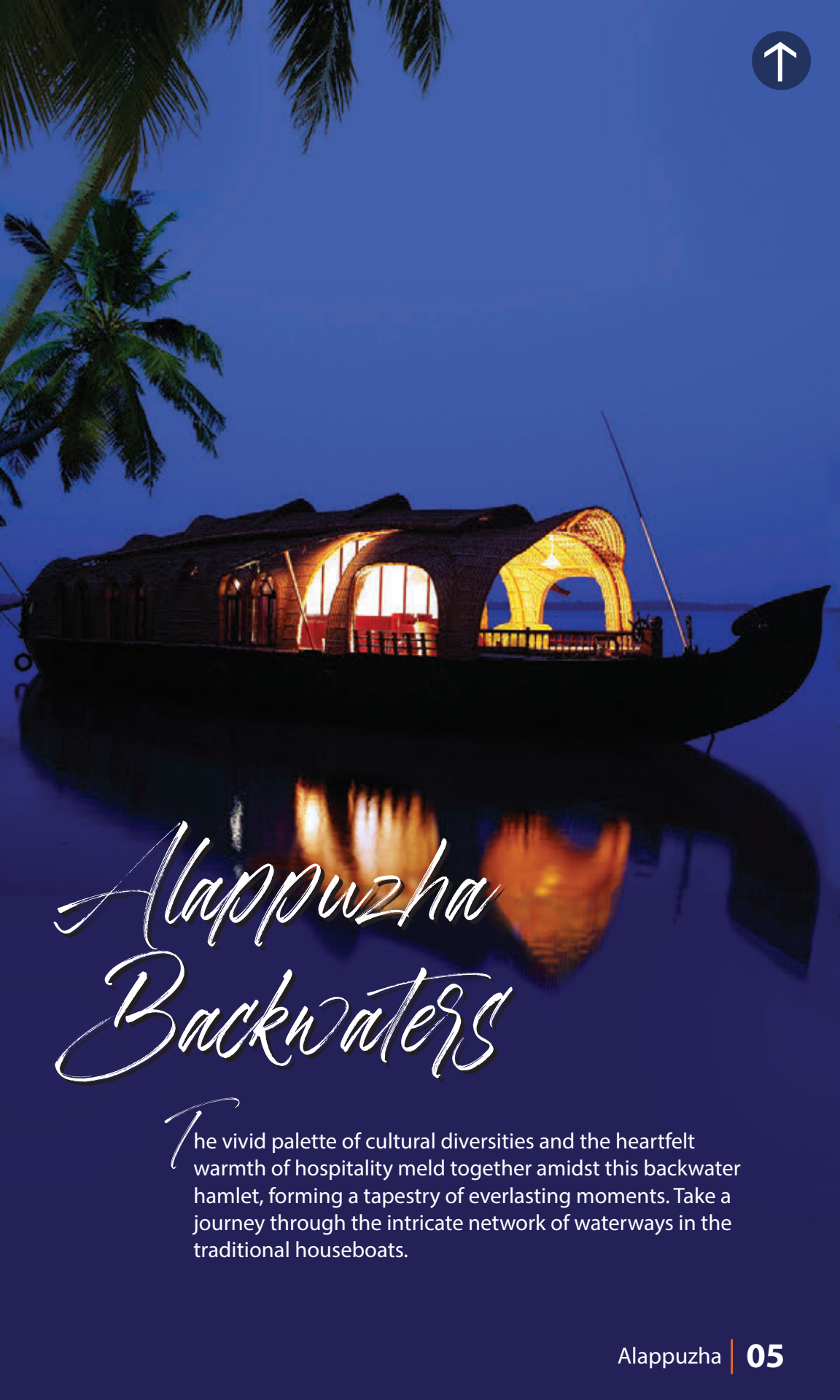
Nehru Trophy Boat Race

25



27 Toddy Shop FoodExperience





Alappuzha Backwaters

The vivid palette of cultural diversities and the heartfelt warmth of hospitality meld together amidst this backwater hamlet, forming a tapestry of everlasting moments. Take a journey through the intricate network of waterways in the traditional houseboats.



Enjoy the enchanting sight of Alappuzha backwaters encircled by swaying coconut trees and lush paddy fields while you sit in a cosy houseboat! A cruise along this exquisite wooden country boat is the first picture that comes to the minds of all travellers whenever they think about Kerala. With a network of backwaters, lagoons and canals, it is a haven for water birds – both endemic and migratory. Catch a glimpse of tiny country boats selling traditional items to the villagers living along the canals and rivers.

When it comes to setting out on a boat journey, do not miss the golden hour, when the sun casts its warm glow on the water lilies in full bloom. Explore the scenic gems of Alappuzha backwaters, such as Kuttanad and Kainakary canals, with a minimum two-day houseboat excursion. The Alappuzha Backwaters is home to a variety of aquatic plants, fish and other creatures including water birds. The charm of the backwaters takes on a new dimension during night. The radiant lights from houseboats and riverside residences paint a picturesque scene on the placid waters, crafting a serene and captivating atmosphere for the visitors.

EXPLORE >

How to reach?

Cochin International Airport

about 85 km

Contact: +91 484 261 0115

Alappuzha Railway Station

Alappuzha Bus Station,

Contact: +91 477 225 2501

Contact:

+91 477 225 1796

Location:

Timing: Throughout the day

Entry Fee: No Fee



Kuttanad

Shimmering canals, endless stretch of paddy fields and quaint villages – a journey to Kuttanad will take you to a slow-paced life where traditional canoes gently navigate through the narrow canals



As you traverse the picturesque expanse of Kuttanad, marvel at the paddy fields while their vivid hues cast a mirror-like reflection on the crystal-clear surface of the backwaters. Take a soul-soothing journey through the narrow canals encircled by the villages while listening to the symphony of Nature. With its unique geographical characteristics, Kuttanad stands as one of the locations where agriculture thrives at depths ranging from 2.5 to 3 m below sea level.

Listen to the tales of Kuttanad's ancient temples where each one serves as a living testament to the rich history of the region. Karumadikuttan Buddha Statue is one such spot that bridges to age-old inf. The best way to explore this rural hamlet is by engaging and having delightful conversations with the locals, who proudly uphold the traditions passed down through generations. Explore the culinary delights at the nearby toddy shops, where you can relish some of the most mouthwatering non-vegetarian and indigenous dishes. Kuttanad goes beyond its culinary delights and houseboat experiences, presenting a myriad of destinations waiting to be discovered.

EXPLORE >



How to reach?

Cochin International Airport

about 107 km

Contact: +91 484 261 0115



Alappuzha Railway Station

about 24 km



Alappuzha Bus Station,

about 25 km

Contact: +91 477 225 2501



Contact:

+91 477 225 1796



Location



Timing: Throughout the day

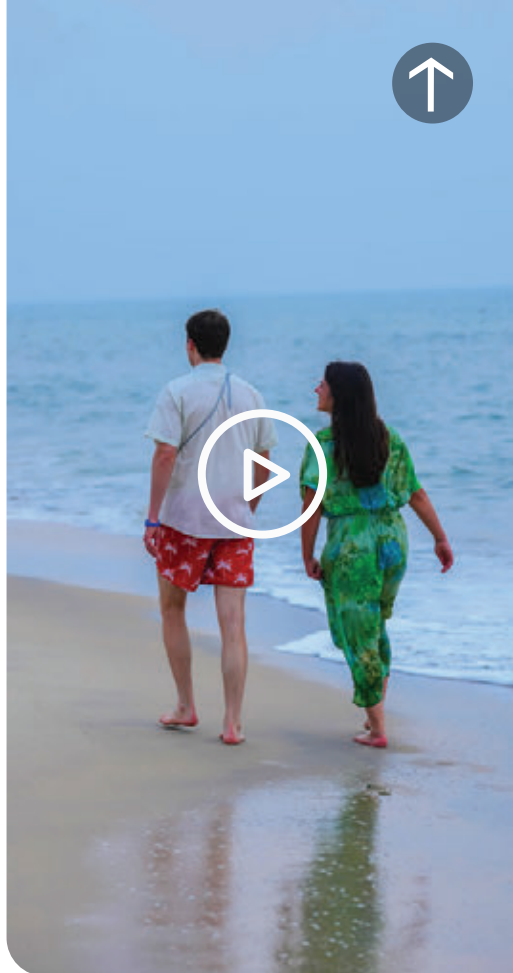


Entry Fee: No Fee



Marari Beach

Marari enchants visitors with its untouched splendour, presenting an exquisite fusion of sun-drenched beach, gently swaying coconut palms and the calming serenade of the sea



How about witnessing a peaceful sunset where the Arabian Sea laps gently over the sun-kissed sands? Tucked away in the enchanting coastline of Alappuzha, the Marari beach is where you can unwind, reconnect and rejuvenate yourself with the unspoiled beauty of Nature. The word *Marari* finds its roots in the name *Mararikulam*, a small fishing village located on this coastal stretch that boasts its rich age-old tradition of fishing. The towering coconut palms gently dancing in the breeze while the symphony of waves playing the backdrop is an experience to behold.

Take a moment to explore the local life and witness the livelihood of the villagers. Observe fishermen embark on their journeys to the sea in colourful wooden boats, utilising time-honoured techniques that resonate with a deep-seated connection to the sea passed down through generations. Savour yourself in Ayurvedic treatments, where skilled practitioners employ natural remedies to ensure both your mental and physical well-being. Beyond a renowned tourist destination, the Marari beach is a place of cultural importance.

How to reach?



Cochin International Airport
about 75 km
Contact: +91 484 261 0115



Alappuzha Railway Station
about 15 km



Cherthala Bus Station,
about 14 km
Contact: +91 478 281 2582



Contact:
+91 477 225 1796



Location



Timing: Throughout the day

Entry Fee: No Fee

EXPLORE >



Krishnapuram Palace

With an aura of eternal elegance,
Krishnapuram Palace echoes with
enchanting stories that weave the
colours of Kerala's cultural magnificence



A testament to the architectural brilliance of traditional Kerala design, Krishnapuram Palace in Kayamkulam was built in the 18th century by Anizham Thirunal Marthanda Varma, the monarch of the Kingdom of Travancore. The palace hosts a museum unveiling a captivating collection of ancient sculptures, paintings, bronze items and diverse collections of antiques. Among the exhibits, the highlight is the Gajendra Moksha, an impressive mural portraying Lord Ganesha, renowned as one of the largest artworks in Kerala.

The palace stands out in architectural elegance, marked by its distinctive gabled roofs, narrow corridors and dormer windows. The intricate wooden carvings are a reflection of the artistry and innovation of local carpenters that add a layer of beauty and uniqueness to this architectural wonder. In addition, visitors can witness the *Kayamkulam Vaal*, a distinctive double-edged sword exhibited in the palace's museum. Krishnapuram Palace not only showcases the opulent history of Kerala but also serves as an immersive gateway to the artistic and cultural heritage of the region. In addition, the palace also has a large pond in its complex.

How to reach?



Cochin International Airport
about 132 km
Contact: +91 484 261 0115



Kayamkulam Railway Station
about 5 km



Kayamkulam Bus Station,
about 3.2 km



Contact:
+91 479 244 1133



Location



Timing: 09:00 AM – 05:00 PM

Entry Fee:
Adults: Rs 25
Kids: Rs 5

EXPLORE >

Karumadi Kuttan



Nestled in Karumady village in Alappuzha, the Karumadikuttan Buddha Statue is a testament to the early Buddhist artistry that flourished in India





Karumadikuttan Buddha Statue - A journal to the age old Buddhist influence in Kerala! The origins of this ancient three-foot, black granite sculpture of Buddha go back to the historical era between the 9th and the 14th centuries during the reign of the Vikramaditya Varaguna, the monarch of the Ay dynasty. Located on the banks of Punnamada lake, it is believed to have been constructed by Buddhist monks who visited Kerala through the port of Alappuzha, carrying the message of love and non-violence to the world.

The cultural fabric of Kerala was once adorned by the influence of Buddhism, and remnants of that era still narrate tales of bygone times. The protection and care of the statue of Lord Buddha fall under the responsibility of the Archeological Survey of India, and it has been a focal point for numerous archaeological investigations. Through multiple excavations, the site has unveiled artefacts and structures, offering valuable glimpses into the historical tapestry of Buddhism in India. The curiosity level of visitors increases as they closely observe this centuries old sculpture. The missing left side of the statue remains as a subject of historical debate.

How to reach?



Cochin International Airport
about 101 km
Contact: +91 484 261 0115



Ambalapuzha Railway Station
about 4 km



Ambalapuzha Bus Station,
about 4.8 km



Contact:
+91 477 225 1796



Location:



Timing: 09:00 AM – 04:30 PM

Entry Fee: No Fee

EXPLORE >



Revi Karunakaran Memorial Museum

Soak up in the Revi Karunakaran Museum in Alappuzha, where a captivating fusion of history and art takes centre stage against the scenic canvas of Alappuzha's beauty



Weaving the narrative of bygone eras, the Revi Karunakaran Museum in Alappuzha district is more than a mere museum. It is a memorial created to honour and celebrate the life of the late Revi Karanukaran, renowned architect of the modernised coir industry in Kerala. At the heart of Alappuzha town, this museum stands out for its extraordinary collection of a variety of precious items. Interestingly, the centuries old ivory and Swarovski crystal collections exhibited here rank among the largest in Kerala.

The artefacts exhibited here were collected by his family over three generations. The museum is a visual delight with its rare collection of beautiful Tanjore paintings along with a 200 sq. ft. mural painting adorned with vegetable dyes. The specially dedicated 'Kerala Room,' showcasing over 3800 pieces of art, sheds light on the cultural evolution of the region. A visit to this museum is a must for those passionate about art and culture. After the death of Revi Karunakaran, his wife Betty Karan established this institution in his memory.

How to reach?



Cochin International Airport
about 81.5 km
Contact: +91 484 261 0115



Alappuzha Railway Station
about 2.4 km



Alappuzha Bus Station,
about 2.1 km
Contact: +91 477 225 2501



Contact:
+91 477 224 2923



Location:



Timing: 09:00 AM – 05:00 PM
(Closed on Mondays and National Holidays)

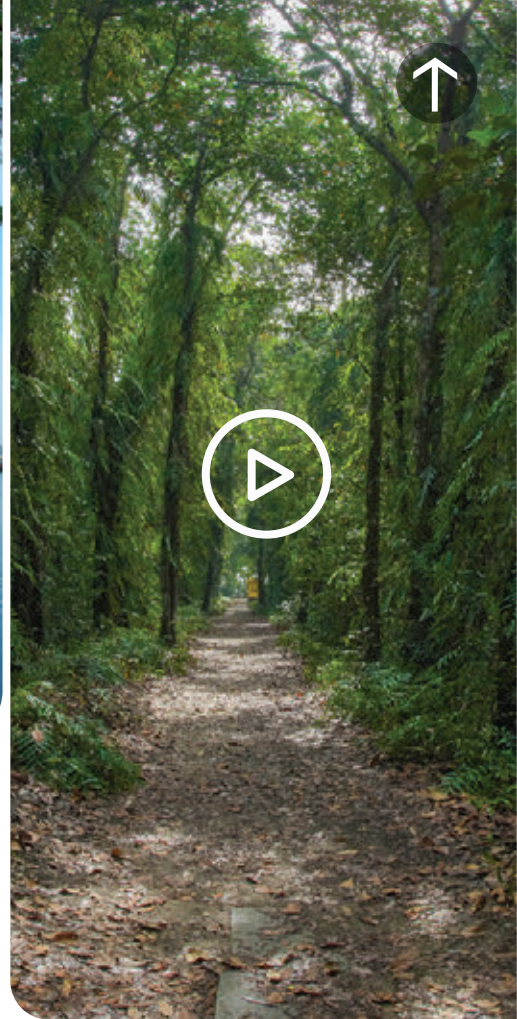
Entry Fee:
Adults: Rs 200
Kids till 8th std: Rs 50

EXPLORE >



Pathiramanal

The Pathiramanal Island's verdant landscape, gently embraced by the tender strokes of the lake, forms a serene and picturesque getaway. Come, let's unfold the magical realm of this hidden gem.



Visualise a secluded island retreat surrounded by the serene beauty of tranquil backwaters! Vibrant butterflies enjoying honey from wild flowers, the symphony of trees swaying in the wind, chirping of birds, lush greenery and migratory birds – the Pathiramanal spread across 10 acres amidst the Vembanad Lake is a visual and auditory delight for every visitor. The name Pathiramanal translates into ‘Sands of Night’. It is a paradise for bird watchers and is only accessible by boat. Wrapped in its green embrace, the region serves as a sanctuary for various rare endemic and migratory birds.

It serves as a home to about 91 native species of birds and 50 migratory birds. Visitors may catch a glimpse of Pintail Ducks, Common Teal, Night Heron, Cormorant, Darter, Indian Shag, Purple Heron, Cattle Egret, Indian Pond Heron, Little Egret, Bronze-winged Jacanas, Stork-billed Kingfisher, Whistling Duck, Cotton Pygmy-Goose, Little Cormorant, and Whiskered Tern. The boat journey to the island will take about 30 minutes, offering a pleasant and picturesque sight for the visitors. This enchanting destination is about 1.5 km from Muhamma Boat Jetty. During the visit, travellers can stroll across the serene ambience, set a boat ride or go bird watching.

How to reach?

Cochin International Airport
about 73 km
Contact: +91 484 261 0115

Alappuzha Railway Station
about 20 km

Alappuzha Bus Station,
about 16.5 km
Contact: +91 477 225 2501

Contact:
+91 477 225 1796

Location:

Timing: Throughout the day

Entry Fee: No Entry Fee

EXPLORE >

A photograph of the Champakkulam Church, a white building with a red-tiled roof and a bell tower, reflected in a body of water. The church has a traditional architectural style with a prominent bell tower on the left and a central gabled roof. The reflection in the water is clear and detailed.

Champakkulam Church

With its rustic charm and enduring elegance,
the Champakkulam Church is a living testament
to the intricate cultural and religious threads
woven into the fabric of the region



Set against the tranquil backdrop of Kerala's backwaters, the Basilica of St Mary, fondly known as the Champakkulam church in Alappuzha is a timeless architectural marvel. Renowned as one of the most ancient churches in Kerala, it is believed to have been established by Saint Thomas around 427 CE. Located in the idyllic village of Champakkulam, this sacred refuge highlights a harmonious blend of traditional Kerala and European architectural influences.

The church interiors are embellished with detailed carvings, vibrant murals and frescoes that vividly portray scenes from the Bible and the inspirational lives of the saints. If you are planning to visit this church, set a reminder for the most celebrated annual feast, a grand spectacle held in June, that sees the gathering of numerous devotees from far and wide across the state! The vicinity of the church is a treasure trove of archaeological artefacts, each bearing testimony to the captivating history embedded in its grounds. As a Forane church, there are several parishes under it. The church belongs to the Syro-Malabar church under the Archeparchy of Changanassery.

EXPLORE >

How to reach?

Cochin International Airport
about 98.4 km
Contact: +91 484 261 0115



Ambalapuzha Railway Station
about 10.4 km



Ambalapuzha Bus Station,
about 9.5 km
Contact: +91 477 225 2501



Contact: +91 477 225 2501



Location



Timing: 06:00 AM – 08:00 PM



Entry Fee: No Fee



Edathua Church

Embraced by lush greenery and emerald backwaters, Edathua Church is a sanctuary where the sacred aura and Nature converge in perfect harmony



How about discovering a church perched on the banks of Kerala's enchanting backwaters? Situated on the picturesque banks of the Pampa, the St George Forane Church in Edathua is a captivating sight that promises to enchant you with its stunning beauty. Renowned as a prominent pilgrimage site in Alappuzha district, this church serves as a Parish of the Syro-Malabar Catholic Church.

The magnificent altar of the church is adorned with a grand, majestic artistic design, creating a breathtaking spectacle. The most celebrated event of the church is the Edathua Perunnal, the feast of St George, which draws a huge crowd. The main festival days witness a lively procession carrying the statue of St George, accompanied by a trade fair held on the church premises. The tale of the church dates back to the age of christianity itself. According to legend, the offerings and prayers at this church has a healing power and it would help devotees free from diseases.

How to reach?



Cochin International Airport

about 111 km

Contact: +91 484 261 0115



Haripad Railway Station

about 12.1 km



Edathua Bus Station,

about 1.4 km

Contact: +91 477 225 2501



Contact:

+91 477 221 2234,
+91 97464 87796



Location:



Time: Mass timings varies

Entry Fee: No Fee

EXPLORE >



Mannarasala Sree Najaraja Temple

Explore the sacred groves, graced by an abundance of serpent idols, and feel the atmosphere filled with the timeless aura of ancient ceremonies and the delicate whispers of the natural surroundings.



In the heart of Haripad in Alappuzha, lies the centuries-old Mannarassala Sree Nagaraja Temple where the chief priest is a woman, warmly addressed as *Mannarassala Amma*. Dedicated to the Serpent God, this temple is believed to have been created by Lord Parashurama, an incarnation of Lord Vishnu. It stands out as the largest of its kind in Kerala, adorned with an astounding collection of over 1,00,000 snake images intricately placed along its pathways and within the natural greenery.

As it is a pilgrimage centre, devotees bring new snake images as offerings. The temple is home to many festivals and rituals. Here, *Mannarasala Ayilyam* is the most celebrated temple festival. A grand procession takes place during the *Ayilyam* asterism in the Malayalam months of *Kanni* and *Thulam* (September and October). All the serpent idols from the grove and the temple are carried to the Brahmin Illam where *Nurum Palum* (rice flour and milk), *Kuruthi* (a red liquid made of turmeric and lime), and cooked rice are offered to the deity. Legends has it that the special turmeric powder prepared in the temple has curative powers.

How to reach?

Cochin International Airport

about 114 km

Contact: +91 484 261 0115



Haripad Railway Station,

about 3.4 km



Haripad Bus Station,

about 2.8 km

Contact: +91 477 225 2501



Contact:

+91 479 241 3214



Location:



Timing: 05:00 AM - 11:00 AM,
05:30 PM - 07:30 PM



Entry Fee: No Fee

EXPLORE >



Vehru Trophy Boat Race

The rhythmic echoes of ancient boat songs resonate through the atmosphere, creating a vibrant zest that defines the cultural vibrancy of Kerala





The pride of Alappuzha! The Nehru Trophy Boat Race is an exhilarating snake boat race that unfolds on the Punnamada lake every year, marking the beginning of the Champions Boat League. The event named after the former Prime Minister of India, Pandit Jawaharlal Nehru, is held on the second Saturday of August every year, and draws in a massive crowd. During the event, the area springs to life with ceremonial water processions and captivating water floats.

The rhythm of vanchippattu along with audience cheering will take you a world of celebrations. A variety of boats compete across different categories. Usually, nine teams participate in the most renowned snake boat race. Witness the awe-inspiring sight of 100 rowers rowing with synchronized precision—a truly mesmerising spectacle. Immerse yourself in the scents of regional culinary delights wafting through the atmosphere, adding a gastronomic dimension to the unfolding spectacle of the boat races. This sensory interplay weaves a mosaic of unique flavours, harmonising with the sights and sounds of this cultural spectacle. If you are planning to visit Alappuzha during the onam season, never miss the opportunity to witness this water carnival.

EXPLORE >

How to reach?



Cochin International Airport
about 83.4 km
Contact: +91 484 261 0115



Alappuzha Railway Station,
about 6.6 km



Alappuzha Bus Station,
about 2.9 km
Contact: +91 477 225 2501



Contact:
+91 477 225 1796



Location:



Timing: August

Entry Fee: No Fee



Toddy Shop Food Experience

A culinary journey through Alappuzha reveals a canvas of flavours - ranging from the spiciness of *varal* curry to the sweetness of vegetable stew





Alappuzha beckons with a tempting array of gastronomic treasures for those who love non-vegetarian delights. Explore the food culture of the region through a culinary escapade into the local toddy shops, where a fusion of time-tested recipes and the lively atmosphere creates a delightful mosaics of flavours. Alappuzha's art of food-making revolves around a core set of ingredients, with rice and coconut taking centre stage.

When visiting the toddy shops, savour a variety of dishes made with freshly caught fish. Delight in the exquisite taste of *karimeen pollichathu*, a culinary masterpiece made from pearl spot fish. Infused with a tantalising spice blend, encased in banana leaves, and grilled to absolute perfection, this dish unveils a harmonious symphony of flavours that leaves an indelible mark on your taste buds. With its unique preparation techniques, the region's masterpiece food items like tapioca with spicy fish curry, karimeen fry, pidi and duck curry, chemmeen roast, and kallummakkaya ularthiyath are revered worldwide. You may find numerous toddy shops on both sides of the roads while travelling via Alappuzha.

How to reach?



Cochin International Airport
about 84 km



Alappuzha Railway Station



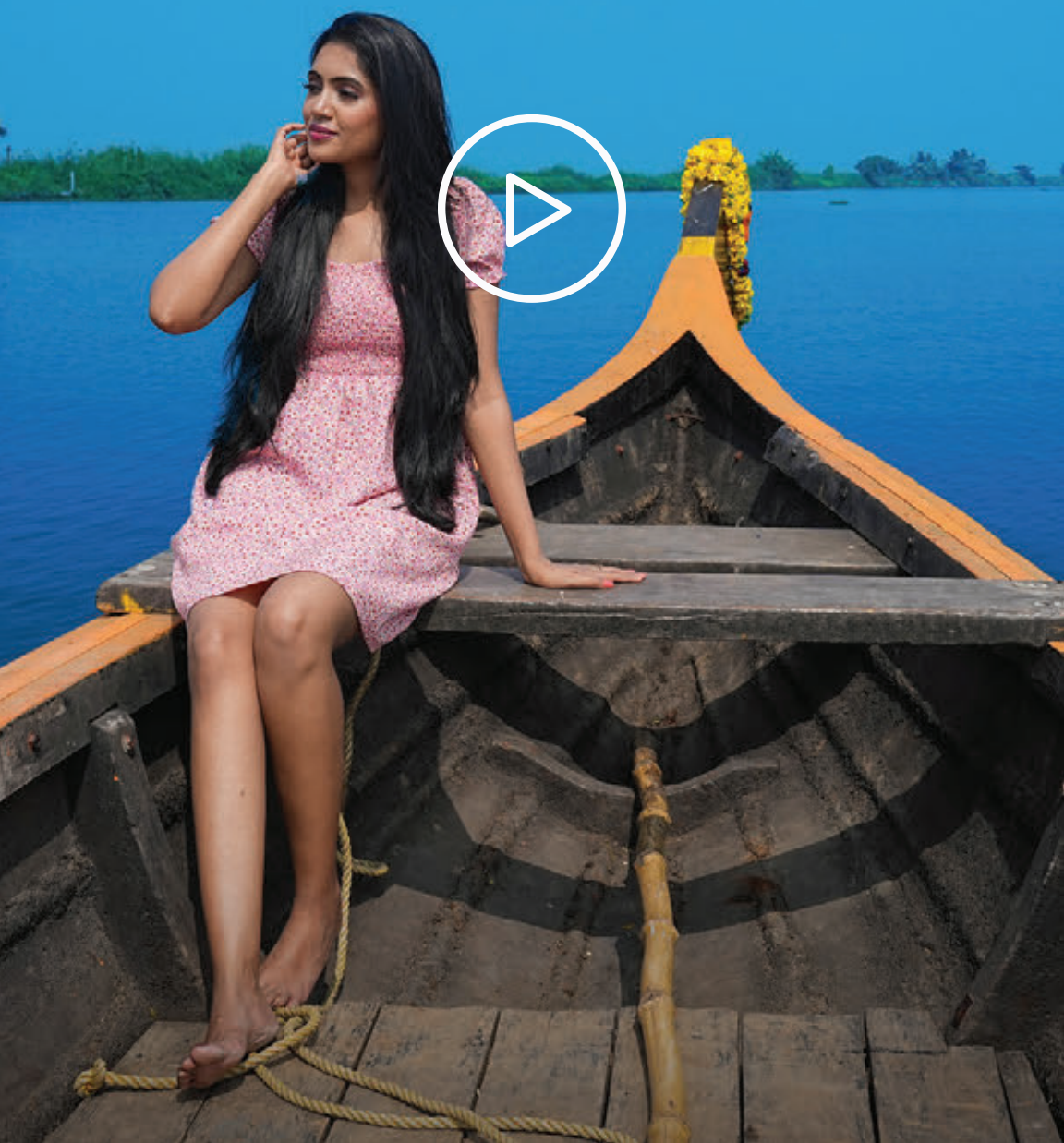
Alappuzha Bus Station

EXPLORE >



Meandering along the Tranquil

Backwaters of Alappuzha





Delving into Historical Treasures at

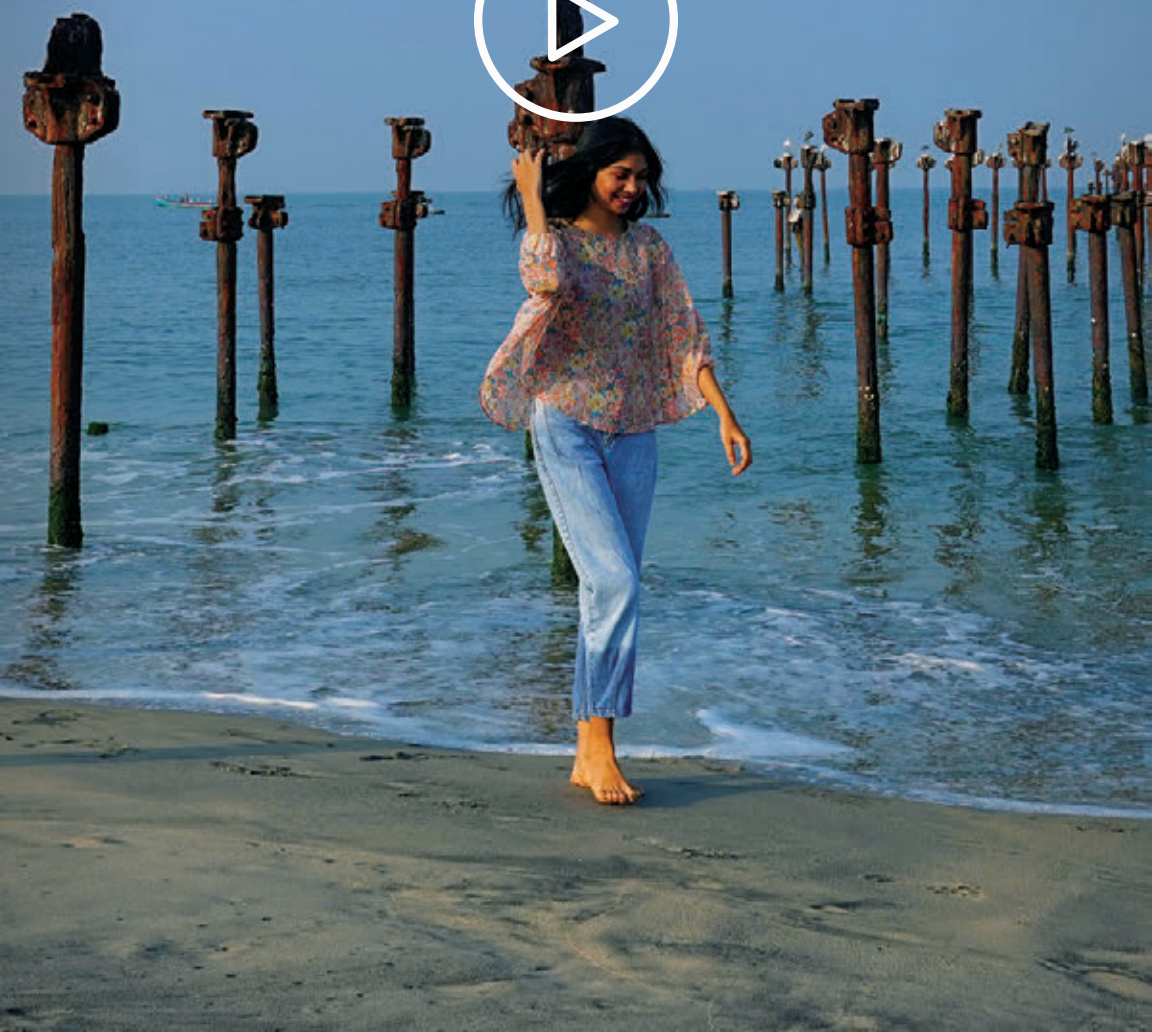
Revi Karunakaran Memorial Museum





The Waves of Ecstasy

Alappuzha Beach





BOOK YOUR STAY

HOTEL

RESORT

HOME STAY

SERVICED VILLA

TOUR OPERATOR



E-Brochure Gallery



A Catalogue of Festivals



Go Camping in Kerala



Thrissur : Where colours
craft stories



Fort Kochi : Where History,
Sleep Serenely

FIND MORE





Thank You



Department of Tourism, Government of Kerala
Park View, Thiruvananthapuram, Kerala, India-695 003



Conceived and Visualised by
Invis Pvt. Ltd.