

KTDC
Lake Palace
THEKKADY



**Stay Royal in the
Midst of Forest**

————— www.ktdc.com —————

Tempting Thekkady

A perfect getaway from hectic urban life, Thekkady on the banks of Periyar is known for its unending chains of hills, rich wildlife and spice-scented plantations.



Altitude

900 – 1,800m
above sea level



Temperature

13°C to 30°C



Climate

Gentle Summers &
Pleasant Winters



Peak Season

September
to May

Common Animals and Birds

Elephants, Bisons, Sambhar Deer, Tigers, Wild Boar, Flying Squirrels, Indian Hornbill, Grackle, Grey Jungle Fowl, Blue-winged Parakeets, Fly Catchers, King Fishers, etc



Discover the Wonders of the Wild

One of the world's richest biodiversity spots, Periyar Tiger Reserve in the Western Ghats is noted for the diversity of wildlife and scenic beauty, and a splendid artificial lake adds to the charm of the park.



KTDC, the Perfect Host of Destination Properties

Official host to God's own country, the KTDC runs premium and budget properties across the entire length and breadth of Kerala to suit any type of traveller.

- KTDC destination properties are in exotic locations, be it along the beaches,

overlooking the backwaters, in the islands, inside jungle reserves or at the heart of the hill stations.

- The KTDC has been playing a key role in building up the infrastructure needed for the development of tourism in the state.

07 Premium Properties

11 Budget Hotels

08 Tamarind

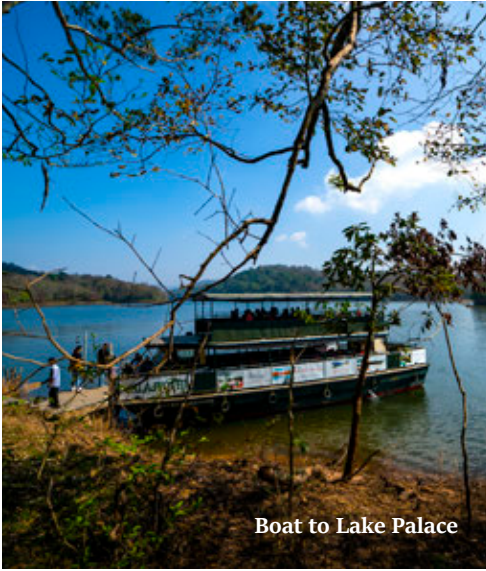
13 Wayside Amenities



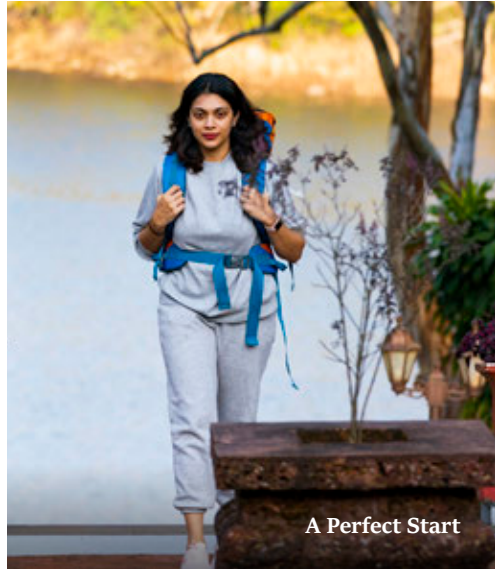


A Stay in the Wilderness of Jungle

Former summer palace of erstwhile kingdom of Travancore, KTDC Lake Palace is situated in the middle of Periyar Lake and nestled inside Periyar Tiger Reserve. This Premium Heritage Jungle Lodge can only be reached by boat from the mainland and it will take hardly 20 minutes to reach here from Thekkady Boat Landing Centre. By staying at Lake Palace, you can enjoy wildlife and its verdant surroundings from the comfort of your bedroom.



Boat to Lake Palace



A Perfect Start



Built in 1927 during the reign of Sree Chithira Thirunal Balarama Varma



Structure Made of Granite Stones



Surrounded by Tall Trees and Manicured Lawns



Open the Door to the Wild



Lobby, a Reminder of Royal Legacy



Tall Ceilings



Feel at Home



Comfort & Luxury



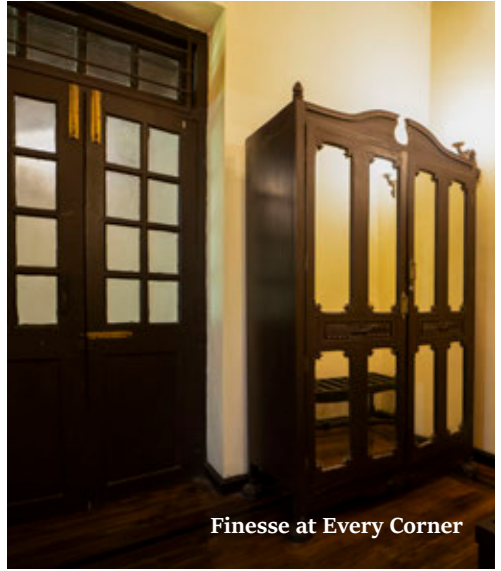
Antique Interiors With Modern Facilities



Perfect Reading Atmosphere



Unique Furniture



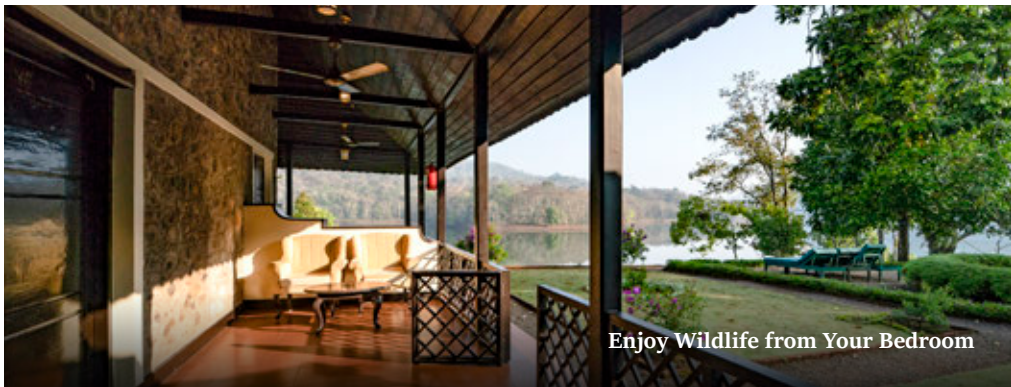
Finesse at Every Corner



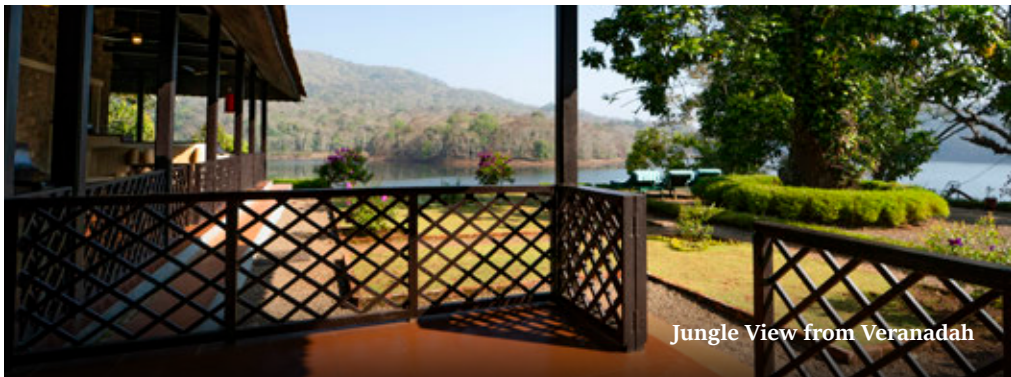
Modern Washrooms



Surrounded by Lake on all 3 Sides



Enjoy Wildlife from Your Bedroom



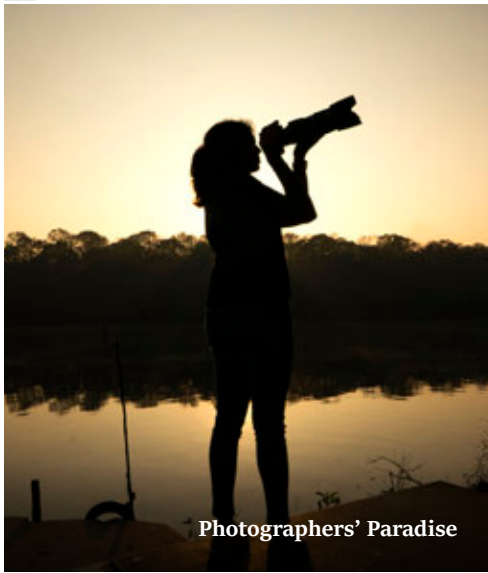
Jungle View from Veranadah



Mesmerizing Views from Room



Time Stops Here



Photographers' Paradise



Scenic Stroll



Try your Hand at Badminton



Relax at Will



Calmness & Serenity all Around



Tall Trees as Boundary Wall



Picturesque Periyar



Feast on Traditional Kerala Dishes as well Indian, Continental Cuisine



Smiling Staff



Hotbed of Wildlife



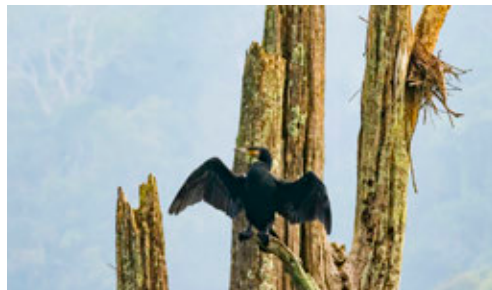
Cinereous Tit (*Parus Cinereus*)



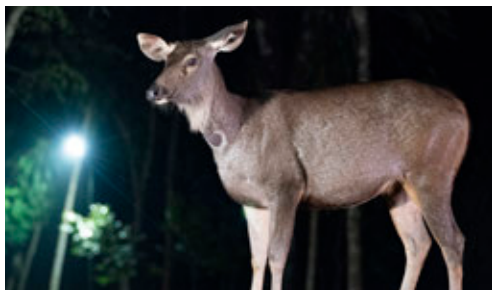
Red-whiskered Bulbul (*Pycnonotus Jocosus*)



Little Egret (*Egretta Garzetta*)



Little Cormorant (*Microcarbo Niger*)



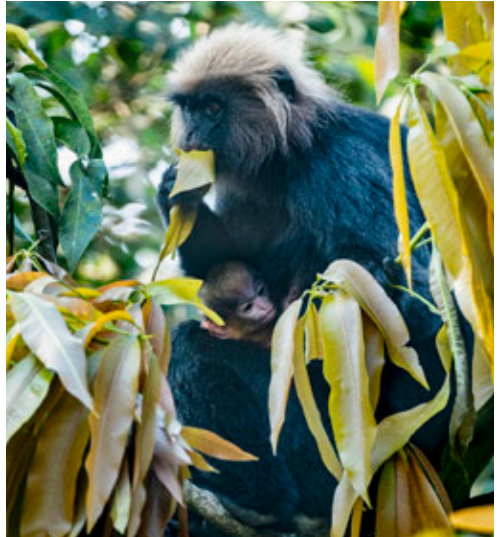
Sambhar Deer (*Rusa Unicolor*)



Malabar Giant Squirrel (*Ratufa Indica*)



Great Indian Hornbill (*Buceros Bicornis*)



Nilgiri Langur (*Trachypithecus Johnii*)



Elephant (*Elephantidae*)

Down Memory Lane



Jawaharlal Nehru, Indira Gandhi & her sons Rajiv Gandhi, Sanjay Gandhi at Thekkady in 1952



Chithira Thirunal, Karthika Thirunal, Uthradom Thirunal & G V Raja on Lake Palace Premises



(Left) Erstwhile Maharani Sethu Parvathi Bayi, ex-Diwan of Travancore Sir CP, Ankoor Rauther, PTR's first Game Warden S.C.H. Robinson; (Right) Old structure of Lake Palace



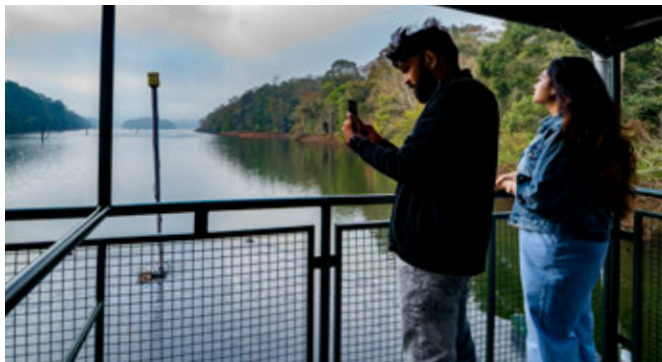
A radio used by erstwhile king Chithira Thirunal Balarama Varma



Tableware used by erstwhile Travancore Royal family

Activities

Your activities start on the doorsteps of Lake Palace



KTDC

Boat Timings

07:30 am

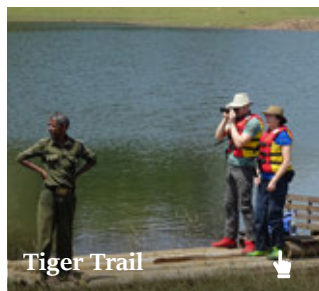
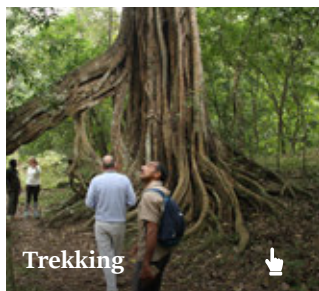
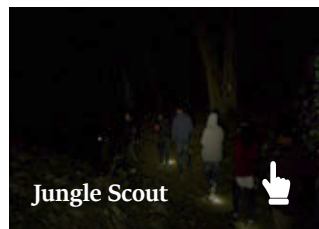
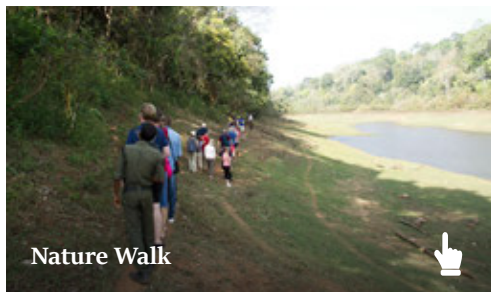
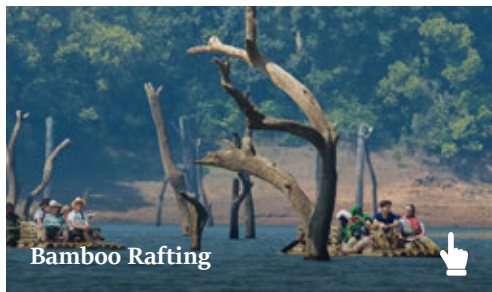
09:30 am

11:15 am

01:45 pm

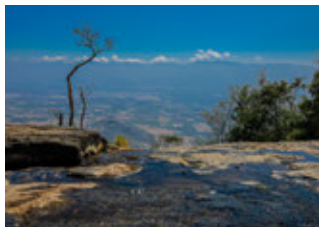
03:30 pm

1.5-hour trip through
the peaceful Periyar Lake



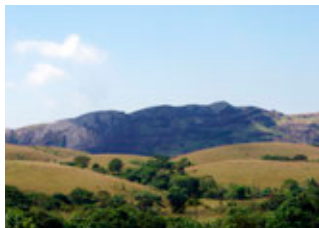
Nearby

Tourist Attractions



Aruvikkuzhi

20 km (about 40 min)



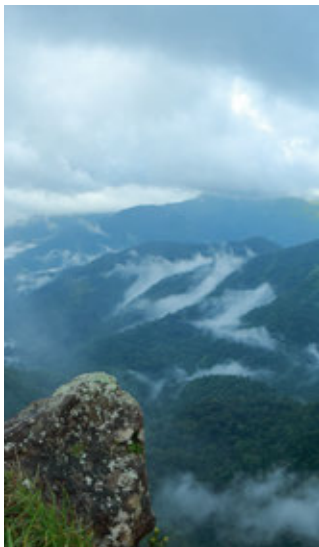
Elappara

45 km (about 1.5 hours)



Wagamon

50 km (about 2 hours)



Parumthumpara

30 km (about 1 hours)



Panchalimedu

50 km (about 1.5 hours)



Ramakkalmedu

45 km (about 1.5 hours)



Gavi

45 km (about 1.5 hours)



Chathurangapara

60 km (about 2 hours)

To book your room

Book online & get discount: www.ktdcbooking.com/booking

CONTACT

Lake Palace (KTDC)
Thekkady,
Idukki - 685536,
Kerala, India

+91-4869-223887,
223888
9400008588

+91-4869-222024

lakepalace@ktdc.com

www.ktdc.com/lake-palace



CONNECTIVITY



Bus Terminal:

Kumily,
5 km away
(about 10 minutes)



Railway Station:

Kottayam, 110 km away (About 3 hrs)
Madurai, 140 km away (About 3.5 hrs)



Airport:

Cochin International Airport,
165 km (About 5 hrs)
Madurai Airport, 160 km (About 3.5 hrs)

KTDC Destination Properties





KTDC Lake Palace

Thekkady, Idukki,
Kerala - 688007, India

www.ktdc.com