

# PALAKKAD

A HISTORICAL CANVAS OF NATURE



UNCOVER THE MESMERISING TONES  
OF PALAKKAD'S LANDSCAPE.



# A HAVEN OF CULTURAL HERITAGE AND GREEN VISTAS



A historical haven amidst a verdant backdrop! Nestled in the heart of the Western Ghats, Palakkad is a district graced by captivating hills, lush forests, scenic landscapes, and a cultural heritage that weaves through its every corner. The district's enchanting natural surroundings have turned it into a sought-after film shooting destination. As you traverse the rural charms of Palakkad, the picturesque panorama of sprawling paddy fields on both sides of the road unfolds, transforming the area into an idyllic spot for road trips. A plethora of historical monuments find their home here, each weaving a narrative that echoes through the ages. Kalpathy Heritage Village in Palakkad has booked a seat in the heritage map of India with its ancient temples, architecture and cultural heritage.

# PALAKKAD

Uncover the Mesmerising  
Tones of Palakkad



Coimbatore  
International Airport



Palakkad  
Railway Station



KSRTC Bus Station,  
Palakkad



## Area

4,482 sq. km



## Altitude

Palakkad has  
an elevation of  
84 metres



## Weather

Dec to Feb:  
Pleasant Weather  
Mar to May:  
Warm Weather  
Jun to Sep:  
Heavy Rainfall



# CONTENTS

06

Parambikulam  
Tiger Reserve

08

Silent Valley  
National Park

10

Nelliampathy

12

Malampuzha

14

Rock Garden

16

Palakkad Fort

18

Kava View  
Point





20

Kalpathi  
Ratholsavam



22

Tholpavakoothu



24

Adakaputhur  
Mirror



26

Ramassery Idli



28

Choolannur Peacock  
Sanctuary





# PARAMBIKULAM TIGER RESERVE

Embark on a journey to the pristine forest land in Palakkad district which can be only reached through Tamil Nadu's Pollachi. With diverse species and landscapes, the region is a must-visit place.



As you ride along the Parambikulam Wildlife Sanctuary, you will be enthralled by the untamed beauty. Delight your senses with the sight of peacocks spreading its feathers, majestic elephants grazing in the woods and the melodious symphony of birds. This pristine destination also offers multiple packages for those who anticipate an adventure in dense forest, which you can also book online. If you are lucky, you may also be able to spot the Tiger. Located in Chittur Taluk of Palakkad district, the Parambikulam is a blessed land with a plethora of endemic flora and fauna. This region and its adjacent sanctuaries boast a population of 32-36 tigers. It is also home to a variety of mammal species, amphibians, reptiles, fish, insects, butterflies and birds. A paradise for bird watchers, the region is home to 250 species of birds, promising a delightful experience for birding enthusiasts. Apart from just enjoying the scenic beauty, one may also embark on jungle safari, bamboo raft and a lot more.

**Entry Fee :** Rs 400 per head



Coimbatore International Airport, about 93 km  
Contact: +91 422 259 2155



Pollachi Railway Station, about 39 km



Pollachi Bus Station, about 41 km



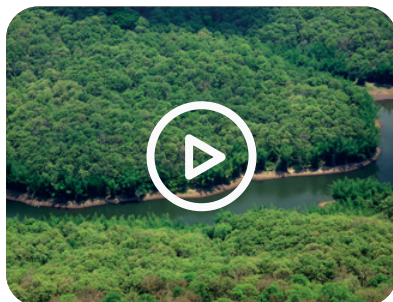
Location



+91 94422 01690  
+91 94422 01691



07:30 AM – 02:30 PM



[Book now](#)

[Explore](#)



A vertical photograph of a mountain landscape. The scene is dominated by dense, dark green forests covering the mountain slopes. Mist or low clouds are draped across the valleys and around the mountain peaks, creating a sense of depth and mystery. The sky is filled with soft, white and light blue clouds, with some brighter patches where the sun might be breaking through. The overall color palette is a mix of deep greens, blues, and whites, giving it a serene and somewhat ethereal feel.

# SILENT VALLEY NATIONAL PARK

Experience the profound stillness of a forest, where the absence of cicadas noises allows you to connect with the wilderness in uninterrupted peace.





The exhilarating climb up the Attappady mountain pass, with its winding hairpin bends, is a prelude to the breathtaking beauty that unfolds at the Silent Valley National Park. Tucked away in the northeast corner of Palakkad district, the route connecting Silent Valley and Attappady unveils a delightful surprise – abundance of gurgling waterfalls nestled amidst the misty forest.

The Silent Valley is a sanctuary for the endangered lion-tailed macaques, and has the largest population of this primate species. From tigers, leopards, elephants, snakes and Malabar Giant Squirrels to moths, insects and amphibians, the variety of endemic species in this rainforest is awe-inspiring. Originating above an altitude of 2000 m in the Nilgiri Hills, the Kunthi river winds its way through the valley before rushing down to the plains through a deep gorge.

**Entry Fee :** Bus: Rs 600 Per head

**Jeep:** The fee for the Jeep Safari varies according to the number of passengers. The packages are available from Rs 1,963 – Rs 3,600.



Coimbatore International Airport, about 85 km  
Contact: +91 422 259 2155



Palakkad Railway Station, about 69 km  
Contact: +91 491 255 5231



Palakkad Bus Station, about 69 km  
Contact: +91 491 252 0098



Location



+91 85898 95652

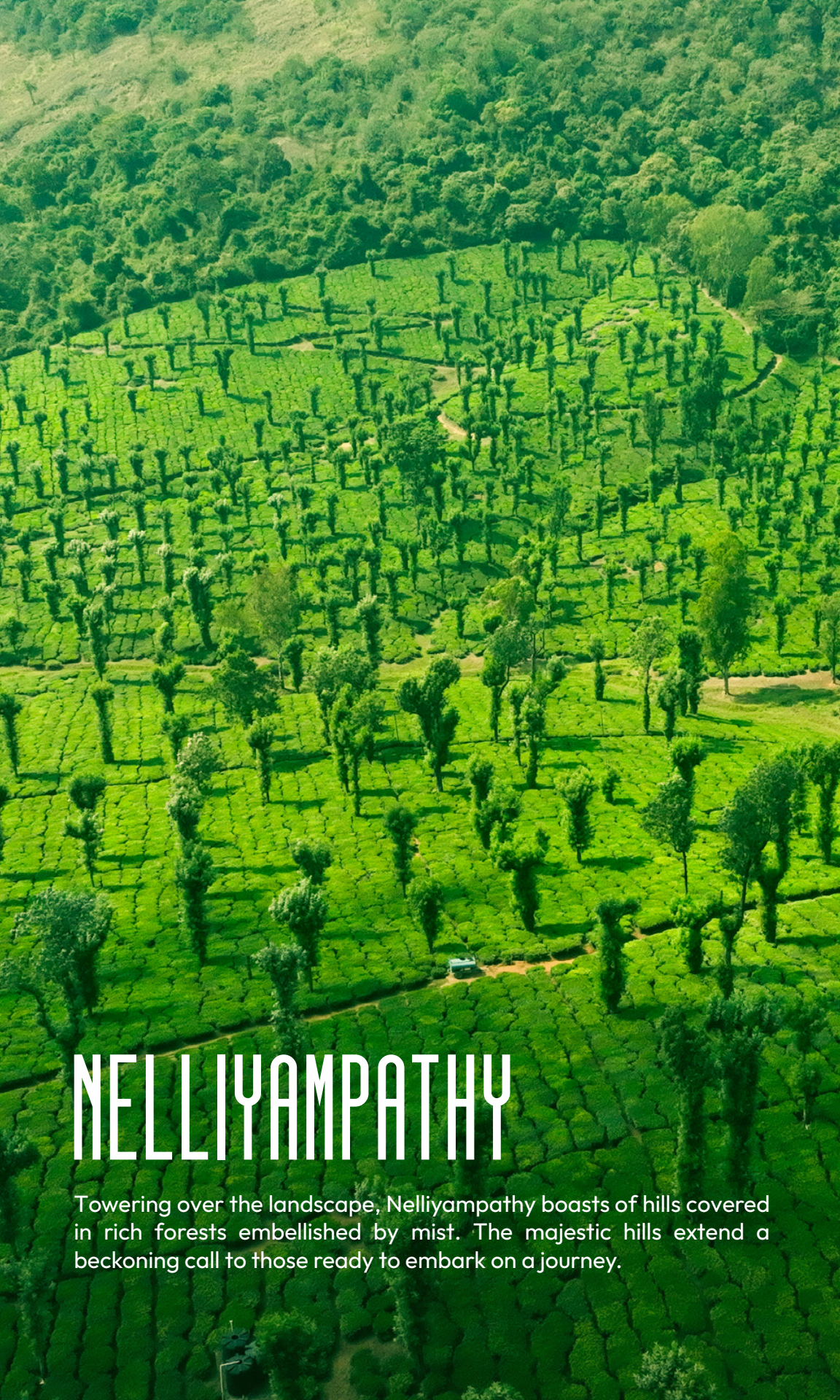


08:00 AM – 01:00 PM

Explore







# NELLIYAMPATHY

Towering over the landscape, Nelliampathy boasts of hills covered in rich forests embellished by mist. The majestic hills extend a beckoning call to those ready to embark on a journey.



While taking a ride along the Nenmara – Nelliampathy route, be prepared to savour the soul-soothing view of the mist-covered forest. The sight of the 10-hairpin bends winding their way up the mighty hills is nothing short of breathtaking. The Pothundi dam, streams and waterfalls are a sight to behold. Experience the charm of Nelliampathy's countryside, characterised by tea plantations and flourishing cultivation of vegetables and fruits. Sightseeing enthusiasts will find a multitude of diverse destinations in this area to explore.

Immerse yourself in the stunning view of Palakkad from the Seetharkund View Point, which reveals the charming village landscapes of the district. Individuals with an interest in organic farming can take a close look at farms and expansive tea estates. The Nelliampathy hills are renowned for their orange cultivation. Nestled among cardamom and coffee plantations, the hills afford a chance to catch sight and cater to the interests of birdwatchers.

**Entry Fee :** No Entry Fee

Explore



Coimbatore International Airport, about 112 km  
Contact: +91 422 259 2155



Palakkad Railway Station, about 57 km  
Contact: +91 491 255 5231



Palakkad Bus Station, about 55.8 km  
Contact: +91 491 252 0098



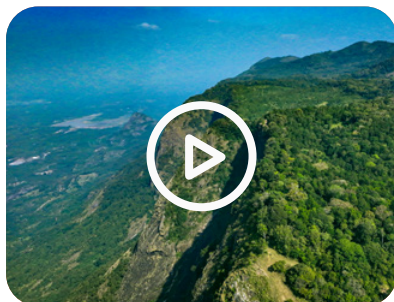
Location



+91 492 324 3179



Throughout the day







# MALAMPUZHA

Embraced by the Malampuzha river, the locale serves as a perfect haven for travellers with its enchanting landscapes and architectural wonders while the Western Ghats plays as a scenic backdrop.





Whether it is a breathtaking sunset, soothing symphony of water and the vivid mosaic of flora – the Malampuzha is a magic of Nature and artistic expression. Set against the stunning panorama of the Western Ghats, Malampuzha is graced by the second-largest dam in Kerala, the Malampuzha dam. It encompasses a suspension bridge, an exhilarating cable car experience, a snake park and a Fantasy Park.

Stretching across the Malampuzha river, this dam is a scenic doorway to a lot of recreational activities and awe-inspiring natural vistas. A beautiful canal winds its way through the heart of the garden, adorned with two charming hanging bridges. Elevate your experience with a ride on the ropeway, which offers a breathtaking aerial view of the garden. Unwind with a boat ride on the tranquil waters within the garden. As night descends, witness the magic as the dam and garden glow with radiant lights.

**Entry Fee :** Children's Park: Rs 20

Rope Way: Rs 70

Snake Park: Rs 20



Coimbatore International Airport, about 58.6 km  
Contact: +91 422 259 2155



Palakkad Railway Station, about 8.5 km  
Contact: +91 491 255 5231



Palakkad Bus Station, about 10.5 km  
Contact: +91 491 252 0098



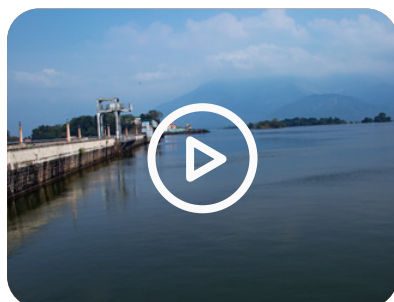
Location



+91 491 253 8996



Throughout the day



Explore





# ROCK GARDEN

Every corner of the Rock Garden whispers tales of creativity - whether it's the recycled tiles crafting a mosaic of stories or the granite stones carving captivating artworks.





**T**ucked about 800 m away from the renowned Malampuzha dam, the Rock Garden is a must-visit spot that opens the door to the art of sculpting with scrap. Adding to its allure, this garden stands out by showcasing artefacts crafted entirely from discarded materials, including used plastic bottles, cans, leftover tiles, granites, stones, electric fuse carriers, power insulators, broken bangles and melamine dishware. Reflecting the vibrant tapestry of the state, the garden's statues capture the essence of Kerala's cultural expressions, presenting scenes from Kathakali, Theyyam, Kalarippayattu, and Thiruvathirakali. Amidst the garden's wonders, lies the Malampuzha Yakshi (demigoddess), an architectural marvel created by the renowned sculptor Kanayi Kunjiraman in 1969. This remarkable array of artworks was crafted and envisioned by the distinguished sculptor Padmasree Nek Chand Saini, the mastermind behind India's first rock garden in Chandigarh. The Malampuzha Rock Garden is the second garden of its kind in India and first in South India.

**Entry Fee :** Adults: Rs 25, Kids: Rs 10

Explore



Coimbatore International Airport, about 59 km  
Contact: +91 422 259 2155



Palakkad Railway Station, about 10 km  
Contact: +91 491 255 5231



Palakkad Bus Station, about 1.3 km  
Contact: +91 491 252 0098



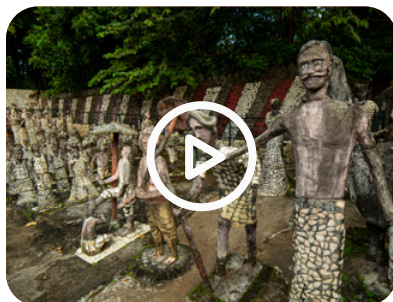
Location



+91 491 253 8996



10:00 AM - 06:30 PM







# PALAKKAD FORT

The Palakkad Fort or Tipu's Fort, located in the heart of Palakkad district is one of the most beautiful heritage spots built in European architectural style in Kerala.





Nestled in the Palakkad district, the Palakkad Fort or Tipu's Fort stands as a testament to the rich tapestry of the region's cultural and architectural heritage. The journey towards this stone-built fort reveals the commanding presence of its majestic bastions, an awe-inspiring sight set against the lush and vibrant greenery that envelops the fortress.

The walls adorned with intricate carvings not only reveal meticulous craftsmanship but also vividly display a harmonious blend of indigenous and European architectural styles, providing a mesmerising window into the fort's historical development. The structure serves as a museum displaying sculptures and artifacts discovered on the fort premises. While it is believed that the fort has ancient roots, the structure in its current appearance took shape around 1766. Adjacent to the fort lies a spacious ground known as Kotta Maithanam, that bustles with activities. This area features an open-air auditorium and a children's park nearby.

**Entry Fee :** Above 15 years – Rs 25

No Fee for kids



Coimbatore International Airport, about 60.8 km  
Contact: +91 422 259 2155



Palakkad Railway Station, about 5.2 km  
Contact: +91 491 255 5231



Palakkad Bus Station, about 1.1 km  
Contact: +91 491 252 0098



Location



+91 492 324 3179



Throughout the day



Explore





# KAVA VIEW POINT

Nestled amidst the Western Ghats, the scenery comes alive with rolling hills and palms gracefully swaying in rhythmic harmony, crafting a breathtaking array of natural grandeur.





**A** leisurely stroll through the grasslands of Kava, caressed by a gentle breeze against an idyllic setting, is enough to unwind the soul. The Kava View Point emerges as a picturesque masterpiece on Palakkad's canvas, framed by enchanting mountains that serve as a captivating backdrop to the endless lush meadows and swaying palms. It is a sought-after spot for photography enthusiasts, especially when the place lights up with the radiant hues of the sunset.

Tucked away behind the Malampuzha Dam, Kava is known as the gateway of rain in Kerala. The forest pathway leading to Kava village is a sanctuary for rare avian species and butterflies, providing a delightful encounter with Nature's wonders.

Kava turns into a dreamland during sunrise and sunset, casting a magical spell on its visitors. The viewpoint provides a peaceful retreat for visitors seeking relaxation and rejuvenation amidst nature's splendour. You may also take a leisurely walk or simply enjoy the rustic beauty of the surroundings.

**Entry Fee :** No Fee

Explore



Coimbatore International Airport, about 60 km  
Contact: +91 422 259 2155



Palakkad Railway Station, about 12.4 km  
Contact: +91 491 255 5231



Palakkad Bus Station, about 3.9 km  
Contact: +91 491 252 0098



Location



+91 491 253 8996



Throughout the day







# KALPATHI RATHOLSAVAM

A celebration of cultural abundance and deep spiritual importance, the Kalpathi Ratholsavam transforms the streets into a vibrant canvas of traditional melodies.





Chants and prayers fill the old cultural street of Kalpathi – with all eyes on the giant chariots carrying the deities. Held at the Sree Vishwanatha Swamy temple, the Kalpathi Ratholsavam is a ten-day festival which unfolds with the majestic procession of six temple chariots winding through the village streets. Embellished with an abundance of flowers, mirrors, trinkets and assorted decorative items, these temple chariots showcase a stunning fusion of artistry and splendour.

Kalpathi *Agraharam*, the Tamil Brahmin settlement area in Palakkad, serves as the vibrant backdrop for the celebration. The temple resonates with Vedic recitals and cultural performances during the initial four days of the festival, a tradition that has endured for more than 700 years. In addition, a week-long Carnatic music festival harmonizes with the festivities.

The celebration transforms into a soulful expedition, extending an open invitation to both residents and visitors to experience and share in the cultural opulence.

**Entry Fee :** No Fee

Explore



Coimbatore International Airport, about 61.7 km  
Contact: +91 422 259 2155



Palakkad Railway Station, about 2.1 km  
Contact: +91 491 255 5231



Palakkad Bus Station, about 3.6 km  
Contact: +91 491 252 0098



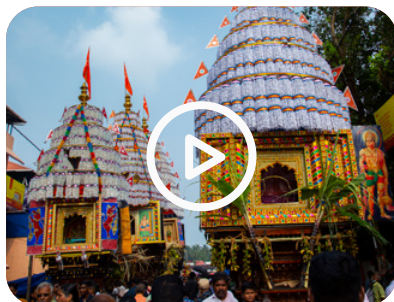
Location



+91 491 257 6575



13, 14, 15 of November, 2024







# THOLPAVAKOOTHU

Tholpavakoothu, with its rhythmic narration, will take you to the ancient realm of epic tales. It surpasses the ordinary cultural showcase and take you to a joyous commemoration of heritage.





The rhythmic tales of 'Kamba Ramayana' envelops the sacred premises of temples when 21 earthen lamps are lit up for the shadow puppetry performance, Paavakoothu. The leather puppets sway and dance behind a distinctive curtain while their silhouettes creating a mesmerising shadow play. The performers give live explanations and interpretations of the verses throughout the rendition, adding depth and context to the overall presentation.

As a ritual art form, the Tholpavakoothu takes centre stage at the dedicated '*Koothu Madam*' theatre in front of the Bhagavathi temples, from the month of January to May. The play, that usually starts during the night, continues throughout the night and uses around 160 puppets representing 71 characters. The language used is a Tamil dialect infused with Sanskrit and Malayalam. Ezhupara, shankhu, chenda, maddalam, chengila and kurum-kuzhal are the instruments used in Tholpavakoothu. Tholpavakoothu in Palakkad is a jubilant homage to heritage — a timeless odyssey.

### Where to Watch?

If you are interested in witnessing this centuries old art, the Tholpavakoothu Puppet Centre is for you. You may also see how the puppets are crafted.



Location



+91 98465 34998

+91 95396 36134



tholpavakoothu@gmail.com

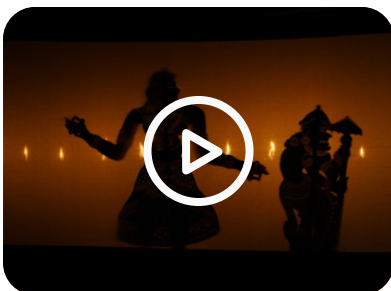


tholpavakoothu.in



January to May

Explore







# ADAKAPUTHUR MIRROR

Intricately crafted by the artisans of Moosari community, the Adakaputhur Metal Mirror is a true marvel that encapsulates the profound cultural heritage of the region.





Located in Palakkad district, Adakaputhur stands as a scenic hamlet, recognised for its authentic craftsmanship in producing the illustrious Adakaputhur metal mirror. Crafted primarily by artisans belonging to the 'Moosari' community, these mirrors are part of their livelihood, which also includes crafting ornaments, utensils in bronze or brass.

The process of making the mirror is elaborate and time-consuming, demanding sustained focus and unwavering attention. The process begins by forming a mould using a mixture of beeswax, castor oil, and sambrani (benzoin resin), followed by encasing it in mud or clay. The casing, featuring a small opening, is dried and then subjected to firing. An alloy comprising copper, tin and unspecified metals is melted at elevated temperatures and poured into the mould. After a day, the mould is broken, and the metal piece undergoes extensive polishing to attain a reflective surface.

The village stands as a centre for Kathakali, Kutiyattam, Ottanthullal, Krishnanattom, Tholpavakoothu, and Pulluvanpattu.



Coimbatore International Airport, about 109 km  
Contact: +91 422 259 2155



Palakkad Railway Station, about 36 km  
Contact: +91 491 255 5231



Ottapalam Bus Station, about 20 km



Explore





# RAMASSERY IDLI

Reflecting the flavours of tradition, the Ramassery Idli unfolds as a delightful culinary masterpiece with its aroma, echoing the diverse food cultures of both Palakkad and Kanchipuram.





Head towards Palakkad if you're in search of truly authentic and local culinary delights. Fondly known as the 'King of Idlis,' the Ramassery Idli is named after Ramassery, a rural village in Palakkad district. The idli stands out in the food map of India with its shape, texture, preparation technique and delicious flavour. These idlis differ significantly from the traditional ones typically enjoyed in the southern regions of the country with their resemblance to dosas. Ramassery village, predominantly inhabited by the Mudaliyar community that migrated from Kanchipuram, Tamil Nadu a hundred years ago, has a rich idli-making heritage, handed down through several generations. Preparing the perfect batter involves a specific combination of rice, black gram, fenugreek and salt.

Experts argue that preparation through the age-old method of steaming in traditional hearths and cooked on chulhas fueled by firewoods is the secret for its true flavour. Savour the exquisite taste of these feather-light idlis, best enjoyed with sambar, coconut chutney or chilli chutney.



Coimbatore International Airport, about 60 km  
Contact: +91 422 259 2155



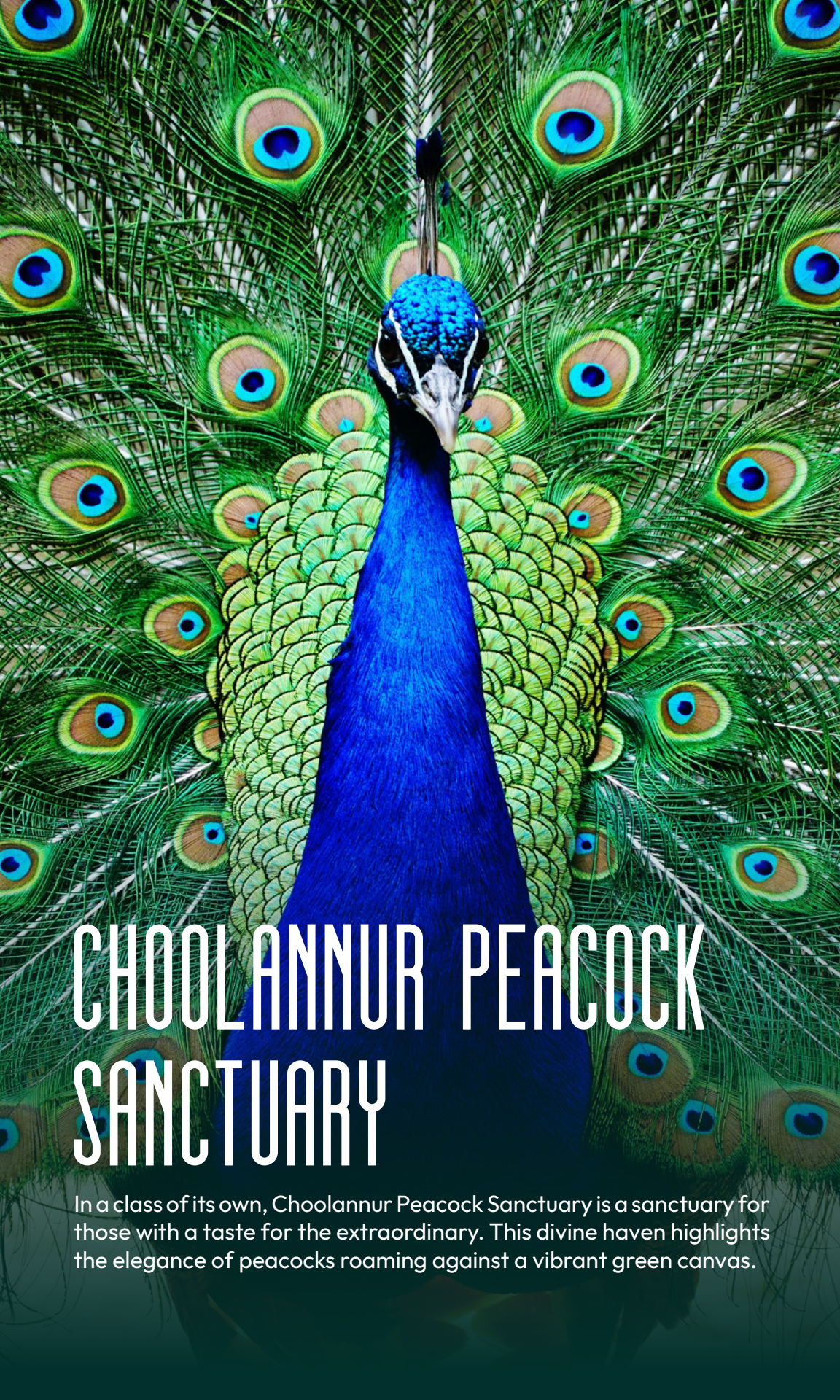
Palakkad Railway Station, about 8 km  
Contact: +91 491 255 5231



Palakkad Bus Station, about 8.5 km  
Contact: +91 491 252 0098

[Explore](#)





# CHOO LANNUR PEACOCK SANCTUARY

In a class of its own, Choolannur Peacock Sanctuary is a sanctuary for those with a taste for the extraordinary. This divine haven highlights the elegance of peacocks roaming against a vibrant green canvas.





**A** sanctuary for avian elegance! Discover the allure of Choolannur Peacock Sanctuary, also known as *Mayiladumpara*, where peacocks thrive amidst a stunning tapestry of green hues. Nestled in Nedungathupura of Palakkad district, this peacock haven extends an invitation to individuals seeking a peaceful retreat into the reassuring embrace of the natural world. Getting to this remote location spanning across 500-hectare requires hiking through verdant forest.

When you arrive there, the scene opens to a sight of hundreds of peacocks roaming around. *Mayiladumpara*, translating to 'the rock where peacocks dance,' lives up to its name, promising a delightful experience as you witness these magnificent birds reveling in their natural habitat. The endless grassland along with trees and shrubs serves as the best sanctuary for peacocks. The destination is at its magical best during dawn and dusk, making it the ideal time for photography enthusiasts to capture stunning images.

**Entry Fee :** Adults: Rs 20  
Students: Rs 15



Calicut International  
Airport, about 60 km  
Contact: +91 483 271 2630



Palakkad Railway Station,  
about 55.9 km  
Contact: +91 491 255 5231



Palakkad Bus Station,  
about 56 km  
Contact: +91 491 252 0098



Location



+91 85476 03466



09:30 AM - 04:30 PM



Explore

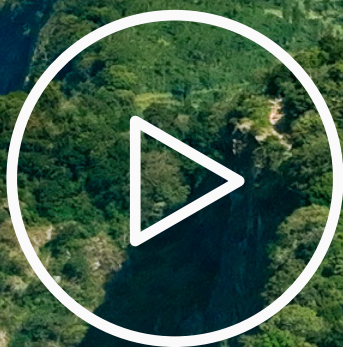




# KAVA VIEW POINT

Where Clouds Dance with the Peaks





Exploring the Elevated Realms of

# NELLIYAMBATHY





# KALPATHY

Where Time-Honored Traditions Thrive



Book Your Stay

Hotels

Resorts

Serviced Villas

Home Stays

Find Tour Operator



# E-BROCHURE GALLERY



## **Kannur**

A Journey of Discovery and Enchantment



## **Live it up!**

Kerala, Hotspot of Adventures



## **Fort Kochi**

Where History, Sleeps Serenely.



## **Thrissur**

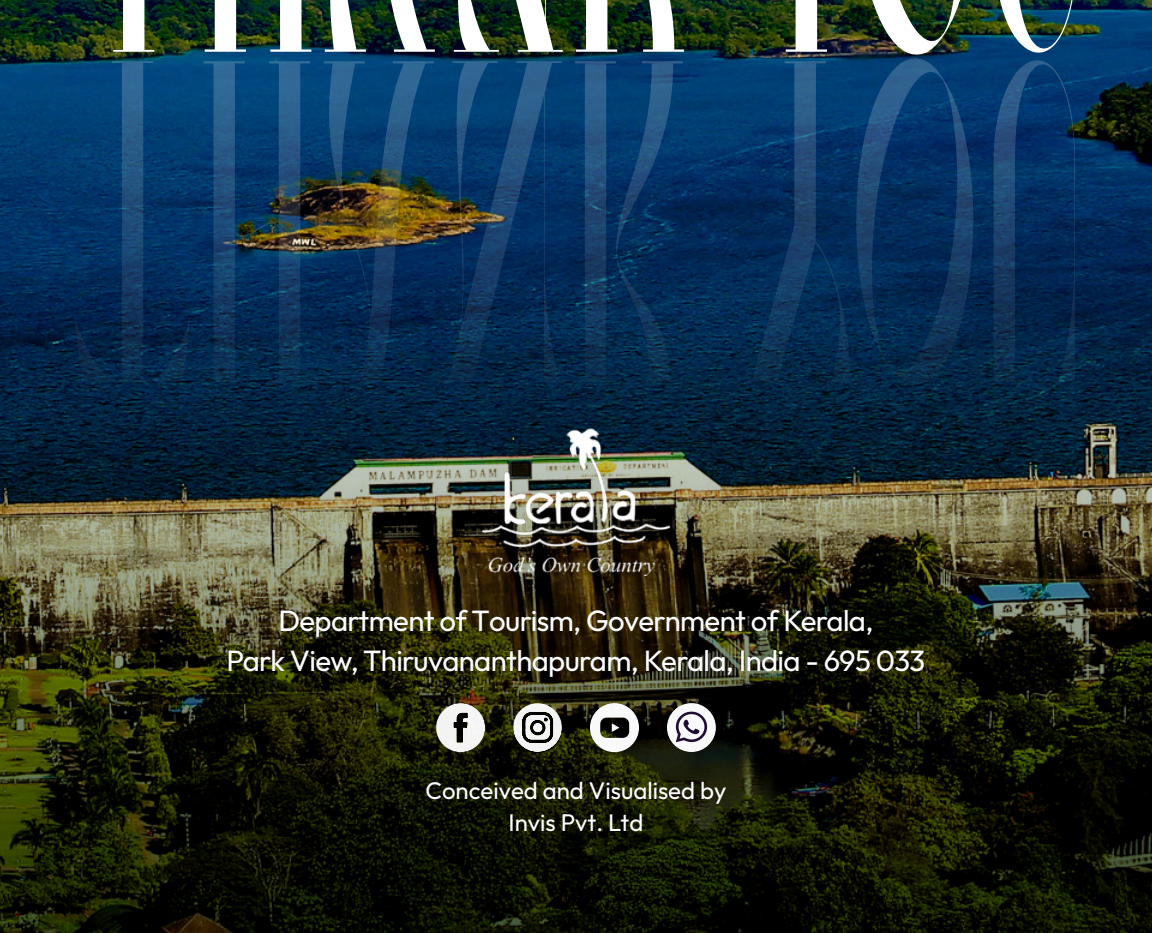
Where colours craft stories

[Find More](#)





# THANK YOU



Department of Tourism, Government of Kerala,  
Park View, Thiruvananthapuram, Kerala, India - 695 033



Conceived and Visualised by  
Invis Pvt. Ltd